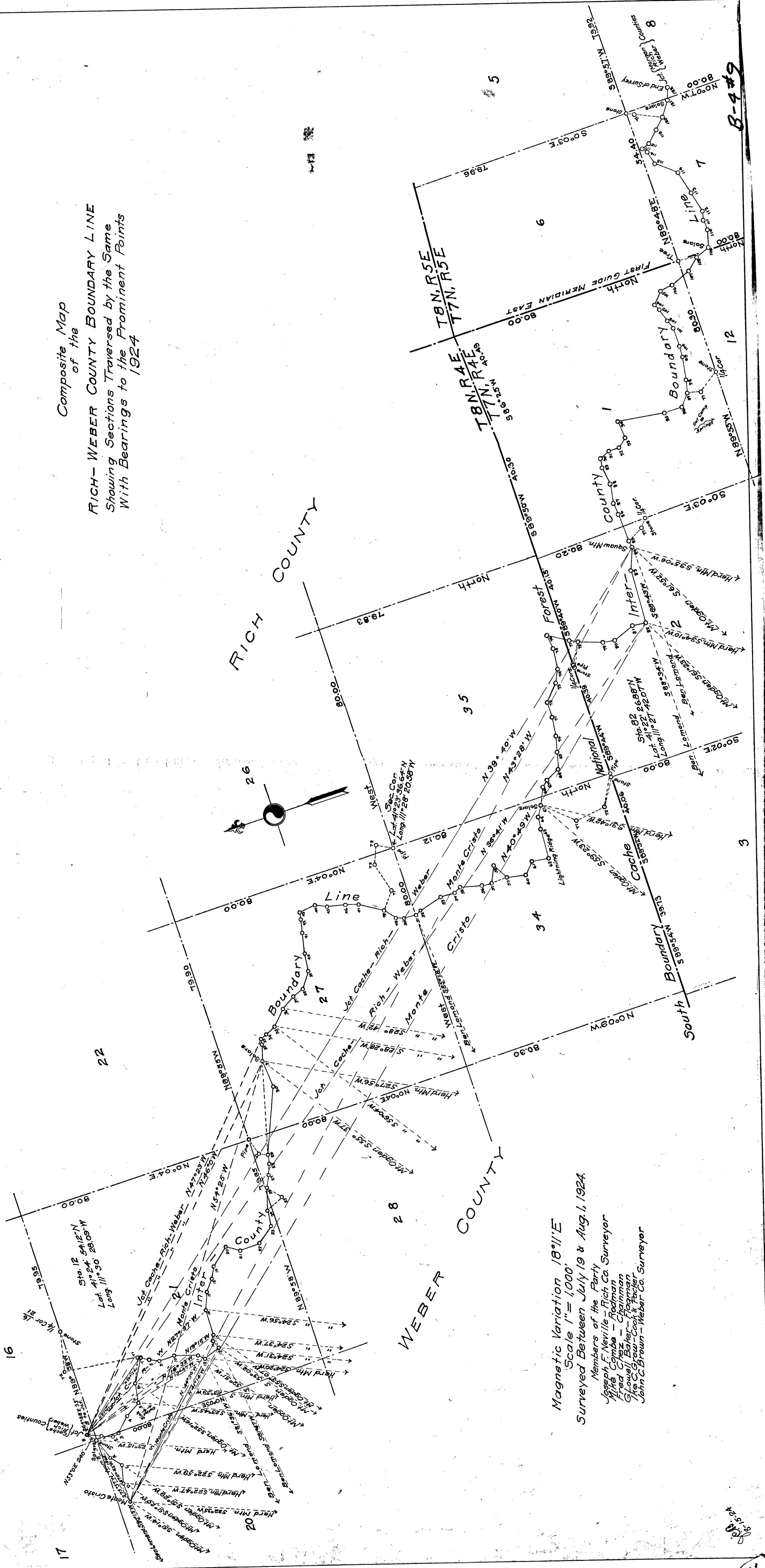


Composite Map
of the
RICH-WEBER COUNTY BOUNDARY LINE
Showing Sections Traversed by the Same
With Bearings to the Prominent Points
1924



Magnetic Variation 18°11'E
Scale 1" = 1,000'
Surveyed Between July 19 & Aug. 1, 1924.
Members of the Party
Joseph F. Neville - Rich Co. Surveyor
Willie Combs - Rodman
Gladys Baker - Chairman
The C. Gray-Cook & Fischer
John C. Brown - Weber Co. Surveyor

8-4#9